



# SHEKHAR COLLEGE OF PHARMACY PARAMEDICAL & NURSING

- PARAMEDICAL COURSES
- PHARMACY COURSES

**SMF CODE 1680**

**D.PHARMA CODE  
2583**



## ABOUT US:-

We are highly fascinated to welcome you all in Shekhar College of Pharmacy Pairamedical & Nursing , Where education does not commence only with the 'Books'. Our aim is to impart all round quality education to the Students with a view to shape them into well rounded, well adjusted and well-tuned Professionals, capable of making their future in various walks of life. We are designed to achieve efficient prefectural system in pharmacy for students.

**Shekhar College of Pharmacy Pairamedical & Nursing came in to being in the year 2021, MGIMT Campus, Kanpur road, Banthra,lucknow-226401** consecrated in the field of Pharmaceutical education & research and continuously generating pharmacy graduates. It's also offering opportunities to contribute to the pharmaceutical industry right from licensed pharmacists. Gallant and inspirational, down-to-earth and friendly, we offer you a world-class learning experience that's bedded in a rich educational heritage at Shekhar College of Pharmacy and Nursing. Cutting-edge research and innovation feeds into teaching resources and methodologies, while you'll find countless opportunities for extra-curricular activities and skills development

## VISION:-

The institute envisions the hope that its graduates and postgraduates will be the leader of tomorrow. Their education is patterned with this view that creates an ambience in which new ideas, research and scholarship flourishes.

## MISSION:-

The institute aims to become a centre of excellence in medical education & research. We are ready to provide quality Medical education supporting better health care program of the nation by training & educating students to contribute to the health of the community and fellow beings.

## OBJECTIVE:-

The institute aims to become a canter of excellence in medical education & research. We are ready to provide quality Medical education supporting better health care program of the nation by training & educating students to contribute to the health of the community and fellow beings.



# Chairman Message



Welcome to Shekhar College of pharmacy, Paramedical & Nursing. In the growing economy and echnological advancement in India, technical education plays an important role. Shekhar College of pharmacy, Paramedical & Nursing. in its Endeavour will impart world class education and give the students chance to quality consciousness. We would also lay stress on the value system and Indian Culture. Shekhar College of pharmacy, Paramedical & Nursing. aims to prepare the students to be successful in the changing workplace. It aims to equip students with knowledge and capabilities, flexibility and an understanding of the societal context of corporate world.

We give the students support and encouragements they need to reach their full potential and their over all development. Today in the era of liberalization, privatization & globalization we try to groom nourish & nurture our students in such a way that they are fully equipped to meet the global demands and serve the Nation with their Technical skills. We strive to give professional education a new perspective and achieve perfection in all spheres. We provide a pleasant & intellectually stimulating environment. The main reason for our tremendous performance is the faculty, which makes us stand out from the rest of colleges and Institutes in Lucknow. We provide exposure to latest and advanced Techniques and system. We gave the world the best we have and the best we can. I am thankful to all my colleagues who are striving hard to establish Shekhar College of pharmacy, Paramedical & Nursing. as one of the leading Institutions. Our motive is “Kku ds fy, izos”k, fodkl ds fy, izLFkku”

**Chairman**  
**C.L. Shekhar**

# **EXECUTIVE DIRECTOR MESSAGE**

At Shekhar College of pharmacy, Paramedical & Nursing. we have cared to bring in well acclaimed, illustrious, student – friendly, active and accessible faculty with commitment, integrity and dedication. Shekhar College of pharmacy, Paramedical & Nursing. has been striving for excellent teacher – learner ambience since the outset. It has created enviable infrastructure in the form of latest Learning Resource Centre, Computer Centre & Laudable Laboratories. Technical education today needs a closely juxtaposed interaction with industry, R&D houses and academics of excellence. We have advanced considerably and are in the process of making fast intimate interaction with the industry. Shekhar College of pharmacy, Paramedical & Nursing. creates technologists enlightened with value – based conduct, honesty, integrity and love for the profession.

In the present socio – economic scenario of globalization, higher education has come to occupy the center stage. Scientific community has been significantly converted into a round – the – world community sharing concepts, exchanging ideas and collaborating on projects with an international yardstick. Web based learning system, fast growing use of internet, importance of video conferencing in learning and research and considered these days as a common practice in the myriad developing fields around the world.

We visualize a broad system with multi – channel objectives of achieving competitiveness on quality parameters by introducing various newer techniques and educational methods like smart class rooms, interactive education system, intensive use of e – sources for knowledge gain and dissemination of information for effective use in tutorials and seminars.

**Executive Director**  
**Nihit Kumar Shekhar**



# COURSE OFFERED



PARAMEDICAL COURSES:

DURATIONS:



**DIPLOMA IN OPTOMETRY**

**2 YEARS**



PHARMACY COURSES:-

DURATIONS:

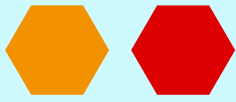


**D.PHARMA**

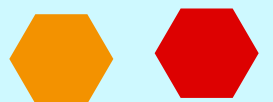
**2 YEARS**







A colorful collection of moments that will make you smile







# ELIGIBILITY

We strictly follow BTE/SMF selection criteria. Eligibility for D.Pharma/B.Pharma, Paramedical courses (Optometry, O.T. Technician\*, Dialysis Technician\*) is with a minimum of 45% marks in 10+2 (PCM/PCB) and 45% marks for SC/ST students.

## ADMISSION PROCEDURE FOR PARAMEDICAL COURSES

COURSE	DURATION	ADMISSION QUALIFICATION
DIPLOMA IN OPTOMETRY	2 YEARS	INTERMEDIATE PASS WITH PCM/PCB With JEECUP

---

## ADMISSION PROCEDURE FOR PARAMEDICAL COURSES

COURSE	DURATION	ADMISSION QUALIFICATION
D.PHARMA	2 YEARS	INTERMEDIATE PASS WITH PCM/PCB With JEECUP

---



## FEES STRUCTURE & SCHOLARSHIP SCHEMES

Without compromising on the quality of education given to the students by well qualified and experienced faculty, the fees of the various courses are quite nominal and surprisingly, less than that of other colleges/institutes in the city/state. This lowering of the fees will also help out in the expenses entailed by the parents/guardians in the educations of the children with the best in the country.

### PARAMEDICAL FEES STRUCTURE 2024-25

COURSE	Intake	APPROVED FEES
DIPLOMA IN OPTOMETRY	60	45000/Year

### PHARMACY COURSE FEES STRUCTURE 2024-25

COURSE	Intake	APPROVED FEES
D.PHARMA	60	50100/Year

# ACADEMIC DEPARTMENTS

## Central Library

The learning and resource center (Library) is the hub of all intellectual and academics. The library has a large pool of resources viz. latest world class Marcel Dekker series of pharmaceutical sciences, Indian and international journals, many more that makes it as diverse as pharma industry. Besides periodicals and references we keep the students up-to-date with the latest through the digital library that includes CDs, audio-visual, internet section, reprographic section.



## LABORATORIES

The role of theoretical as well as the practical knowledge is mandatory in any technical education curriculum that makes the laboratories 'the backbone' of a technical institute. The institute is furnished with well advanced hi-tech labs having all modern facilities. Following are the operational labs:

- Pharmaceutical Chemistry-I
- Pharmaceutical Chemistry-II
- Pharmaceutics-I
- Pharmaceutics-II
- Pharmaceutics-III
- Pharmacology
- Pharmacognosy
- Anatomy Physiology
- Pharmaceutical Microbiology and Pharmaceutical Biochemistry
- Machine Room
- Central Instrumentation Room







# SPORTS /EXTRA CURRICULAR ACTIVITIES



Shekhar College of Pharmacy and Nursing facilities to remind us that all work and no play will make us dull boys. Extra-curricular activities form part of our curriculum. There are plenty of leisure opportunities. There is also a big playground for outdoor games like volleyball, badminton & cricket etc and carom every year.



- Doctor's Day
- Women Empowerment Program
- Yoga Day
- Cultural Program
- Farewell
- Fresher's Party
- Alumni Meet
- Teacher's Day





# Extra Classes for weaker Students

## EXTRA CLASSES

Knowing that most students are not able to keep up with the brighter ones, we run extra classes for the weaker students to enable them to catch up with their classmates. This will also serve as a source of encouragement and spur them on to greater heights, not only in the academic world, but also in character and nation-building.



## TRANSPORTATION

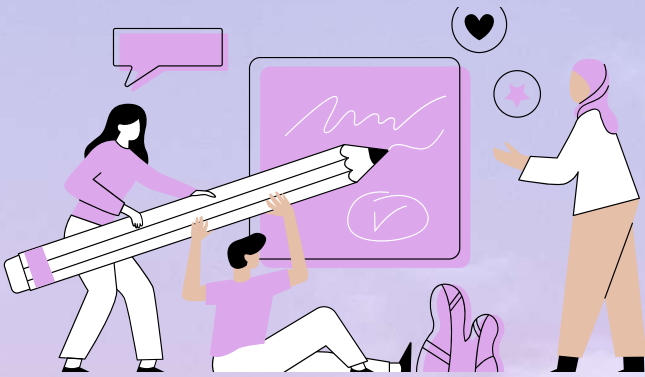
The College provides transport services regularly between campus and the city. College buses are made available to the students and faculty members for the commuting from various points in the city to the college and back.





# RAGGING

IS STRICTLY  
PROHIBITED IN THE INSTITUTION  
AS PER JUDGEMENT OF  
HONORABLE SUPREME COURT



## SPECIAL FEATURES

- Highly qualified, professional, experienced faculty & staff.
- Full concentration on grooming of the students.
- Scholarships for Meritorious Students
- Modern Classroom, Library, Computer Lab.
- Separate Hostel facility for Boys & Girls with good quality food.
- Bus facility for students, faculty & staff for commuting.
- Excellent sports facility.
- Special attention and class for weaker students.





# WELCOME TO SHEKHAR COLLEGE OF PHARMACY AND NURSING

## CONTACTS

### Call/Whatsapp Us

- 9555014545
- 9956147000

### Email

 [Scpn2022@gmail.com](mailto:Scpn2022@gmail.com)



**COLLEGE SITUATED:- MGIMT CAMPUS, N.H.-25, KANPUR  
ROAD, BANTHRA , LUCKNOW-226401**